

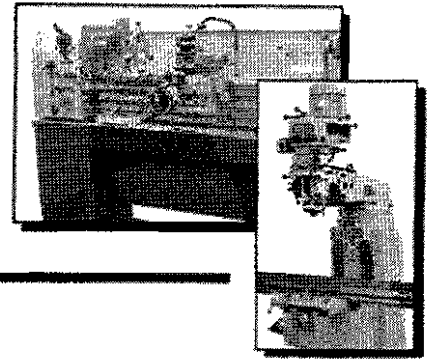


**MACHINERY DIVISION**

6465 18 MILE ROAD  
STERLING HEIGHTS, MI 48314

**PHONE:**  
(586) 731-3600 • 1-800-860-1740

**FAX:**  
(586) 731-7464 • 1-800-862-1740



## **MODEL COS-16 CUT-OFF SAW**

**THANK YOU FOR PURCHASING WITH KBC MACHINERY. ALL KBC MACHINES ARE BACKED BY OUR 1 YEAR PARTS REPLACEMENT WARRANTY. WHEN USED AS INTENDED, AND WITH PROPER MAINTENANCE THIS MACHINE WILL PROVIDE YOU WITH YEARS OF TROUBLE-FREE SERVICE. IF YOU NEED PARTS SIMPLY FILL OUT THE PARTS REQUEST FORM, AND FAX OR E-MAIL YOUR REQUEST. ALL OTHER QUESTIONS PLEASE CONTACT US @ :**

**KBC MACHINERY  
6465 18 MILE ROAD  
STERLING HEIGHTS, MI 48314  
PH (800) 860-1740  
FAX (800) 862-1740  
[MACHINERY@KBCTOOLS.COM](mailto:MACHINERY@KBCTOOLS.COM)  
[WWW.KBCTOOLSANDMACHINERY.COM](http://WWW.KBCTOOLSANDMACHINERY.COM)**



# PARTS REQUEST FORM

YOUR COMPANY NAME: \_\_\_\_\_

STATE/PROVINCE \_\_\_\_\_

YOUR NAME \_\_\_\_\_

PHONE # + EXT \_\_\_\_\_

FAX # \_\_\_\_\_

MACHINE INFO:

MAKE/MANUFACTURER \_\_\_\_\_

MODEL NUMBER \_\_\_\_\_

YEAR MADE \_\_\_\_\_

SERIAL# \_\_\_\_\_

PARTS REQUESTED:

PART#

DESCRIPTION

\_\_\_\_\_  
\_\_\_\_\_  
\_\_\_\_\_  
\_\_\_\_\_  
\_\_\_\_\_  
\_\_\_\_\_  
\_\_\_\_\_

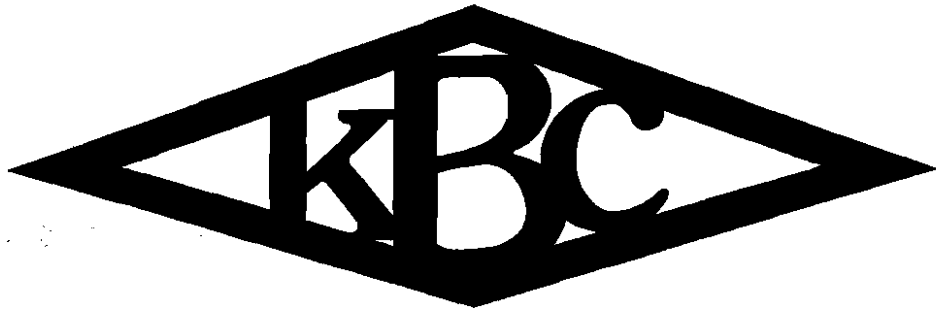
\_\_\_\_\_  
\_\_\_\_\_  
\_\_\_\_\_  
\_\_\_\_\_  
\_\_\_\_\_  
\_\_\_\_\_  
\_\_\_\_\_

PLEASE INCLUDE COPY(S) OF THE PARTS DRAWING FROM THE  
MANUAL AND CIRCLE THE PARTS NEEDED

FAX PARTS REQUEST TO (800) 862-1740

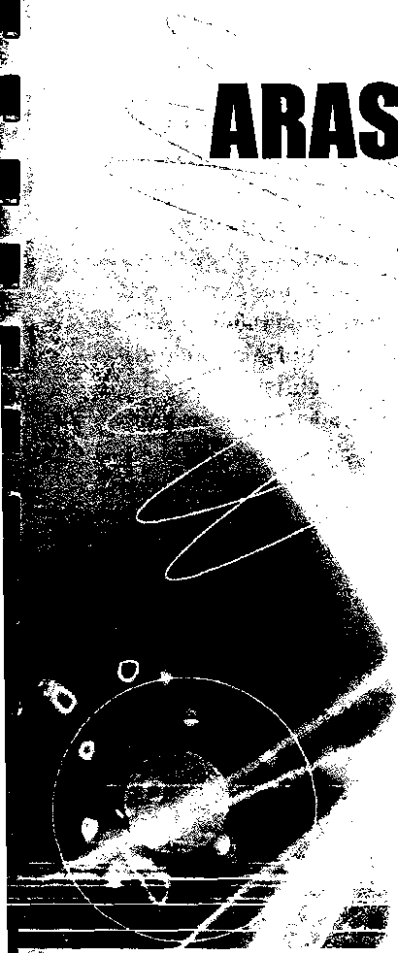
E-MAIL PARTS REQUEST TO: [machinery@kbctools.com](mailto:machinery@kbctools.com)

THANKS; KBC MACHINERY - MICHIGAN



**machinery**

**ABRASIVE CUT-OFF SAW  
COS-16**



**Operation manual**

# Cut-Off Abrasive Saw Model-16

## Operation Manual

### I. Operation Method

#### 1. The fix of grip:

Pull the grip to the end available for a screw to insert in the fixed hole and fix it tightly.

#### 2. Transportation and Installation:

On removing the machine, use hook only to buckle the hanger, hold grips upright slightly and haul to the eyeing direction.

\*Beware of your feet safety and hold them below the machine, it is better to install the machine on the flat ground.

#### 3. Power Connection:

Open the switch box to connect wires with terminals and fix them with a clip.

\*Wire pith no less than 2mm can be used; when emery wheel revolves conversely, just exchange the two wire piths of the three wire piths.

#### 4. Bearings Confirmation:

While connecting wires with power, confirm if the bearings is revolving to the indication arrow on safety cover for converse revolving is very dangerous.

### II. Points for Operation

Before you operate the machine, be sure to go through the following warnings.

1. Simple wears will keep you from being involved in the rotating belt and for your safety, not to wear knitted gloves or broad cuffs.
2. Be away from places in contact with moisture or oil that will cause danger like electric conduction and wherein motor induction effect will decrease.
3. The switch sparkles on turn on/off, therefore flammable or explosive articles are absolutely forbidden in use.
4. To secure safety and actual operation, full light and neat circumstances ( hidden dangers lie especially on a great mess one stands ) are requirements for workshop.
5. Better to wear eyes protectors, safety caps and mouth-muffles to secure operation safety.

### III. Operation Line

#### I. The adjustment of elastic belt:

- A. The elasticity of V belt such as the picture on the right is appropriate.
- B. A situation of over-loose or over-tight, please take the following steps for adjustment.
  - a. loosen the fixed hexagonal head screw.
  - b. loosen the adjustment nut and use the hexagonal head screw for adjustment of elastic adjustment.
  - c. relock and fix the screw.
  - d. lock the adjustment nut as to fix the hexagonal head screw for a tight adjustment.

## 2. Exchange of Cutting wheel:

Use screwdriver to impede the spindle revolving and use spanner accessory to loosen the hexagonal head screw for exchange. After the exchange, notice if the hexagonal head screw is exactly looked or it will go to dangers without starting. It is very necessary to have a notice of the use.

## 3. Cutting-Angles Varification:

To loosen the two hexagonal head screw by a spanner and fix it at arbitrary angle.

- \* Angle of clipping articles will vary out of the hexagonal head screw is not locked tightly, thus the hexagonal head screw should be locked as tight as required.

wood-board cutting in 120-230mm width

-loosen and take off the hexagonal head screw and fix the guide plate to the position 50mm away.

- \* At this moment, materials less than 50mm is beyond the clipping ability of a vise.

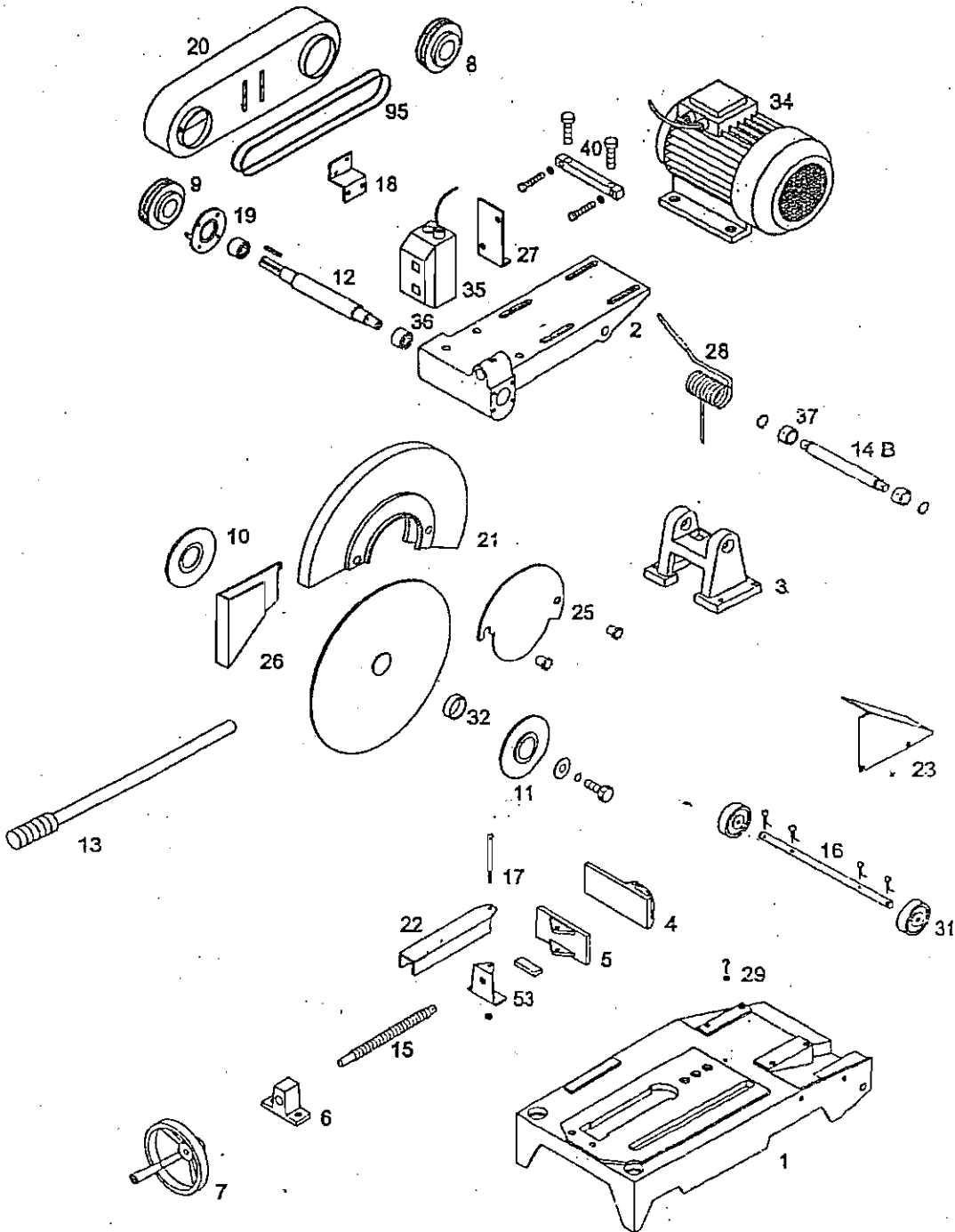
## IV. Points for Workmen

1. Apart from those uncare in direct operation, no idlers are permitted to enter the workshop especially, the approach of children is in danger that worth watching out.
2. In case that electric induction incidents may happen, the groudng for connectiong plug attached to the switch must be well done.
3. Use voltage indicated on plate
4. Select cutting wheel that is enduring for the indicated revolving speed and emery wheel with strengthening fiber.
5. Processing materials should be on firm position to enable hands to operate machine-freely; unnatural pose or operation will make our body or machine imbalanced from which danger may result.
6. Before plugging socket, be sure the machine power is off.
7. Make sure if the emery wheel is exactly installed.
8. Once there is fissure, deformation, weight imbalance on emery wheel or using those underirable tools would call into being incidents. Please take installation steps undesirable tools would call into being incidents. Please take installation steps in the manual for reference.
9. Stop the operation at once provided that the unsmooth conveyance in poeration or condition occurs.
10. Pull the plug out of socket when you are ready to rearrange or check parts.
11. To secruce durability, safety and high frequency in operation by a regular inspection. For repair or inspection.
12. Do not expose unused tools in the moisture or-light, places inclined to change temper-ature or near to volatile articles and places beyond the reach of children.

## V. Main Functions

Main functions, shape and the other parts will be subject to change for betterment.

# Supercut 400



# Parts Listing - SUPERCUT 400

(Product No. 8010100)

QTY	PART NO.	DESCRIPTION	QTY
1	8010101	BED	
2	8010102	MOTOR BASE	GRUB SCREW 6MMX6MM HEX HD. 6MMX12MM (Shipp.Ch.)
3	8010103	CONNECTING STAND	GRUB SCREW 6MMX6MM HEX HD. 10MMX40MM
4	8010104	FIXED VICE	HEX HD. 16MMX100MM HEX HD. 16MMX50MM
5	8010105	MOVEABLE VICE	
6	8010106	VICE SCREW SEAT	HEX HD. 10MMX30MM
7	8010107	CIRCULAR HANDLE	GRUB SCREW 8MMX6MM
8	8010108	MOTOR PULLEY 86MM	GRUB SCREW 6MMX6MM
9	8010109	MAIN PULLEY 75MM	GRUB SCREW 6MMX6MM
10	8010110	INNER FLANGE	
11	8010111	OUTER FLANGE	HEX HD. 10MMX20MM SPRING WASHER 10MM WASHER 44MMX10MMX4MM
12	8010112	GRINDER SHAFT	
13	8010113	HANDLE	HEX HD. 6MMX25MM
14	8010114	STD CONNECTING SHAFT	GRUB SCREW 6MMX6MM
14B	8010114B	MOD. CONNECTING SHAFT	GRUB SCREW 6MMX6MM CIRCLIPS 18MM
15	8010115	VICE SCREW	
16	8010116	WHEEL SHAFT	SPLIT PIN
17	8010117	VICE SHAFT	
18	8010118	BELT COVER BRACKET	HEX HD. 6MMX12MM
19	8010119	BEARING COVER	PAN HD. PHILIPS 6MMX12MM
20	8010120	BELT COVER	HEX HD. 6MMX12MM
21	8010121	C/OFF WHEEL COVER	PAN HD. PHILLIPS 6MMX12MM
22	8010122	VICE SCREW COVER	
23	8010123	BED COVER	PAN HD. PHILLIPS 6MMX12MM
25	8010125	MOVEABLE COVER	THUMB SCR. 6MMX10MM
26	8010126	SAFETY COVER	MH.CAPSCR. 5MMX10MM
27	8010127	SWITCH BRACKET	CAP SCREW 6MMX12MM
28	8010128	SPRING	
29	8010129	PACKING HOOK	
31	8010131	BED WHEEL	
32	8010132	C/OFF WHEEL BUSH	
34	8010134	MOTOR	HEX HD. 8MMX40MM
35	8010135	SWITCH - PDL DOL STARTER	PAN HD. SCREWS 4MMX12MM M4 NYLOC
36	8010136	GRIND. SHAFT BEARINGS 6206RS	
37	8010137	CONNECTING STAND BUSH	GRUB SCREW 6MMX6MM
40	8010140	MOTOR ADJUSTMENT PLATE	CAP SCREW 8MMX25MM CAP SCREW 8MMX60MM
53	8010153	VICE SCREW BRACKET	
95	8010195	V-BELT B36	